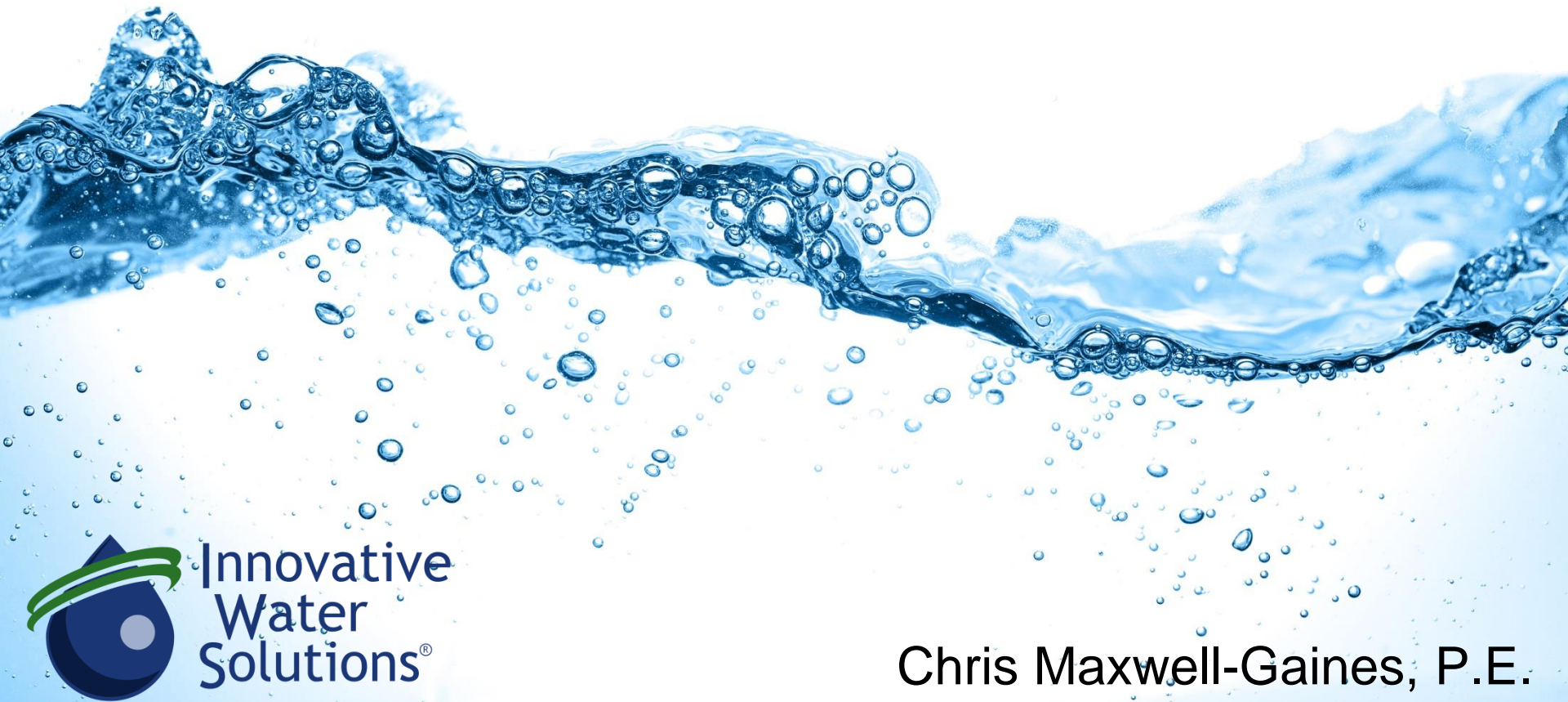


Five Birds... One Stone

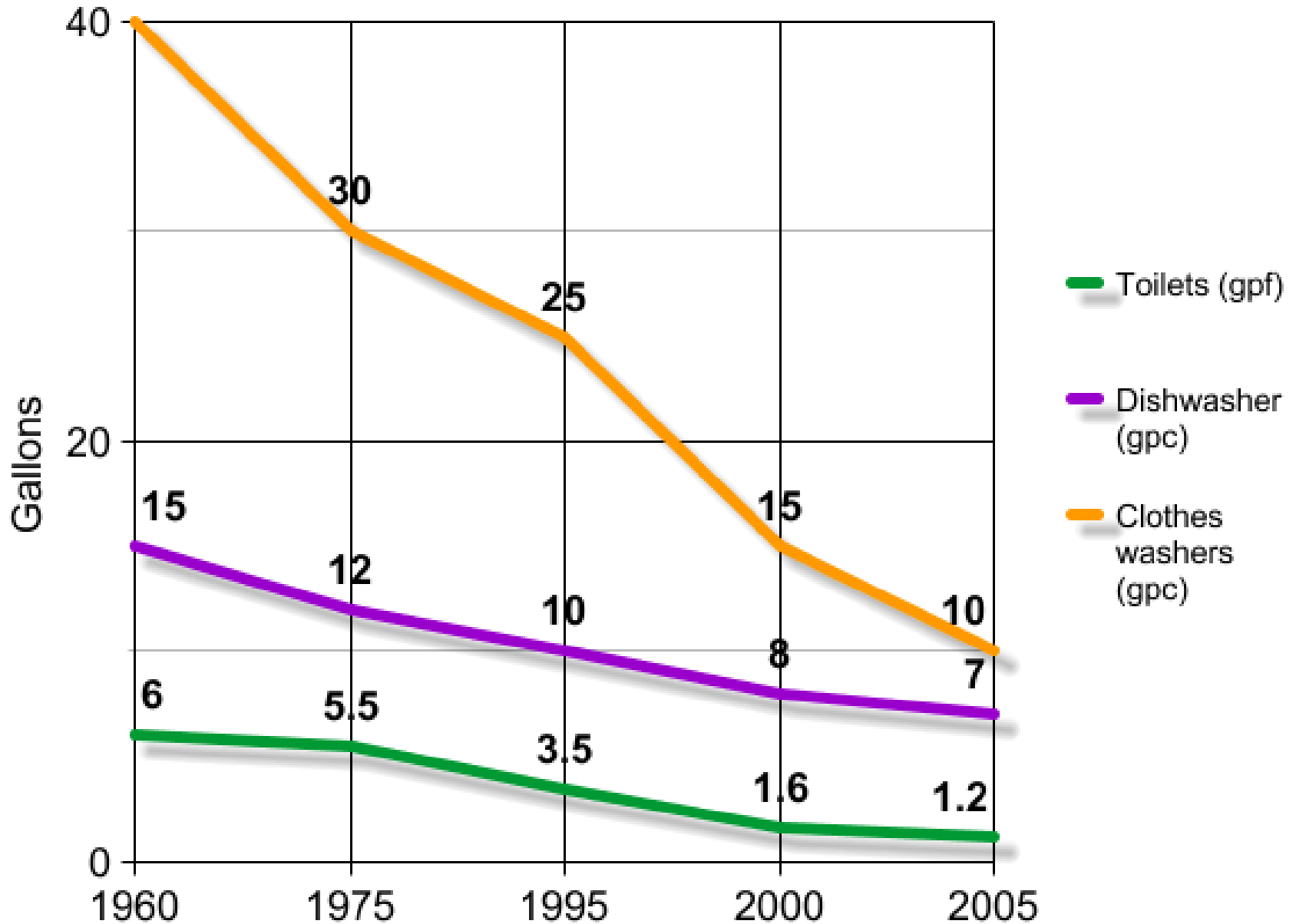
The Case for Rainwater Harvesting



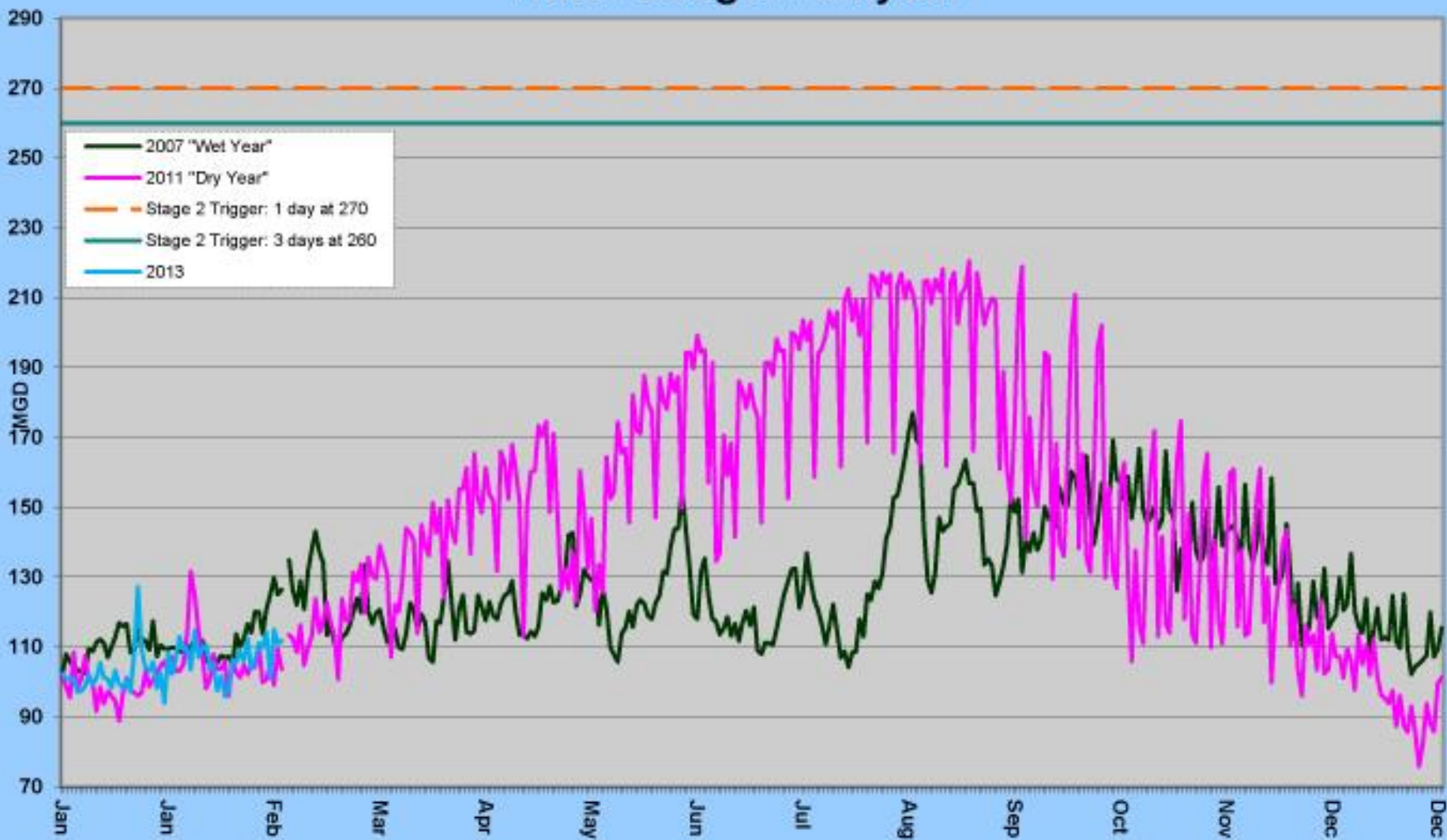
Chris Maxwell-Gaines, P.E.



Progression of Indoor Fixture Efficiency

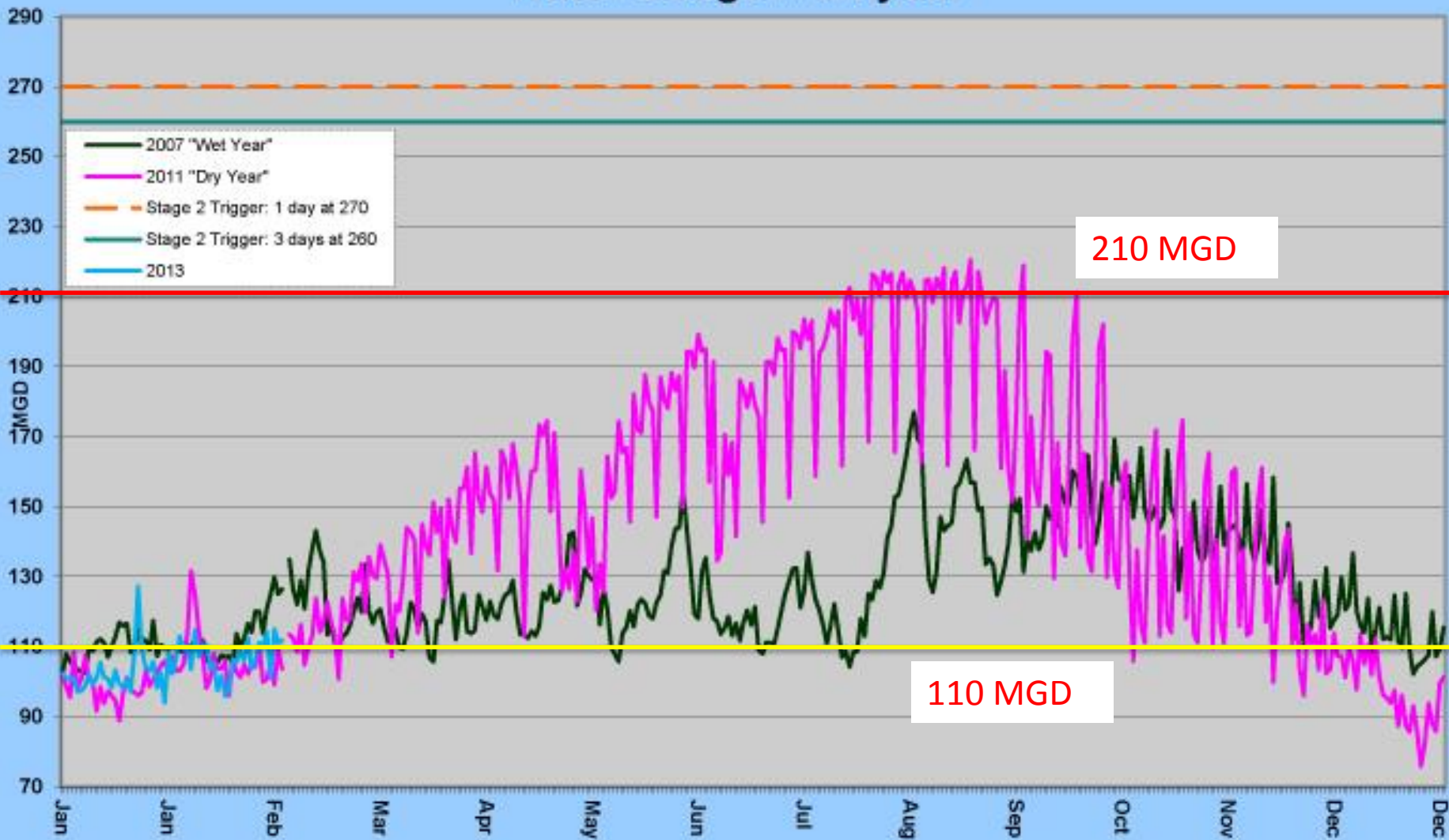


Water Usage Multiyear

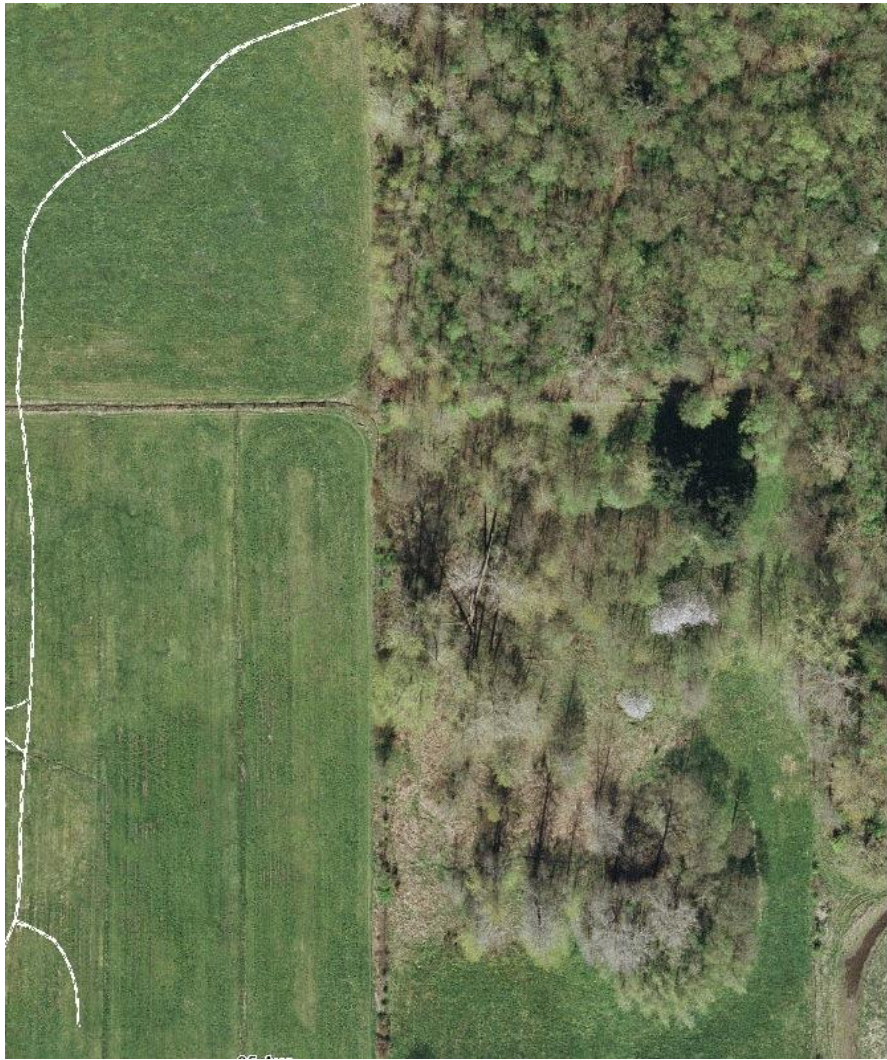


Source: Austin Water website

Water Usage Multiyear



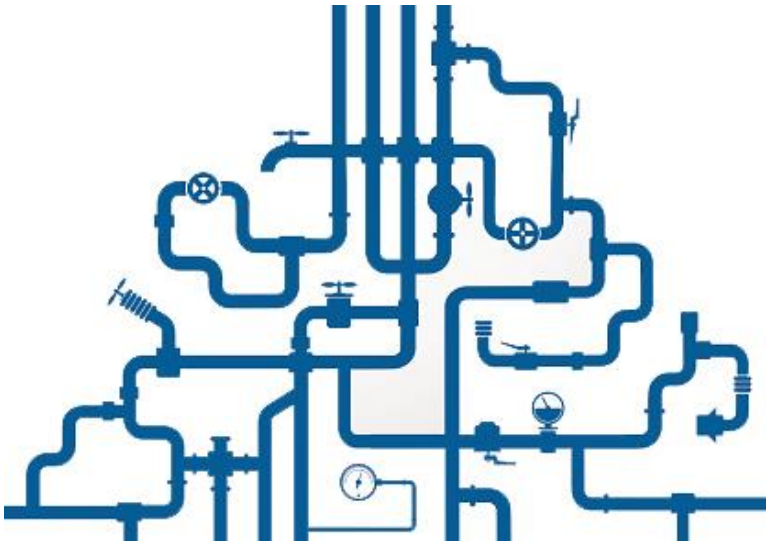
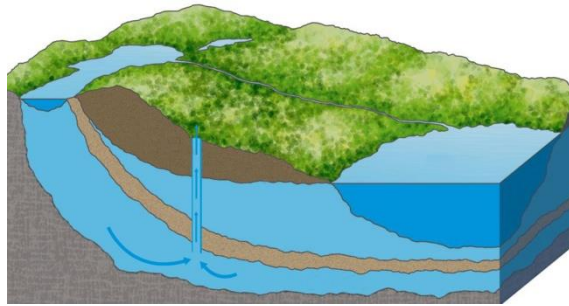




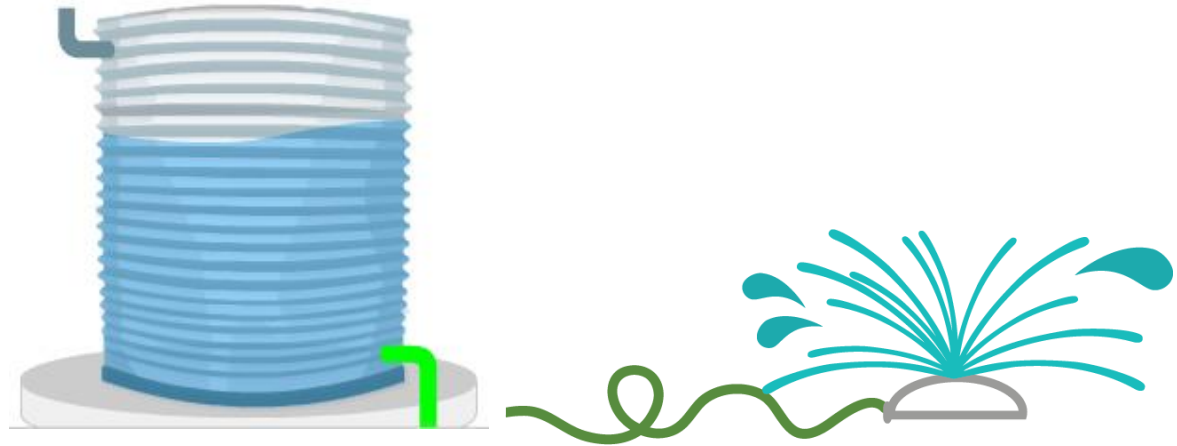




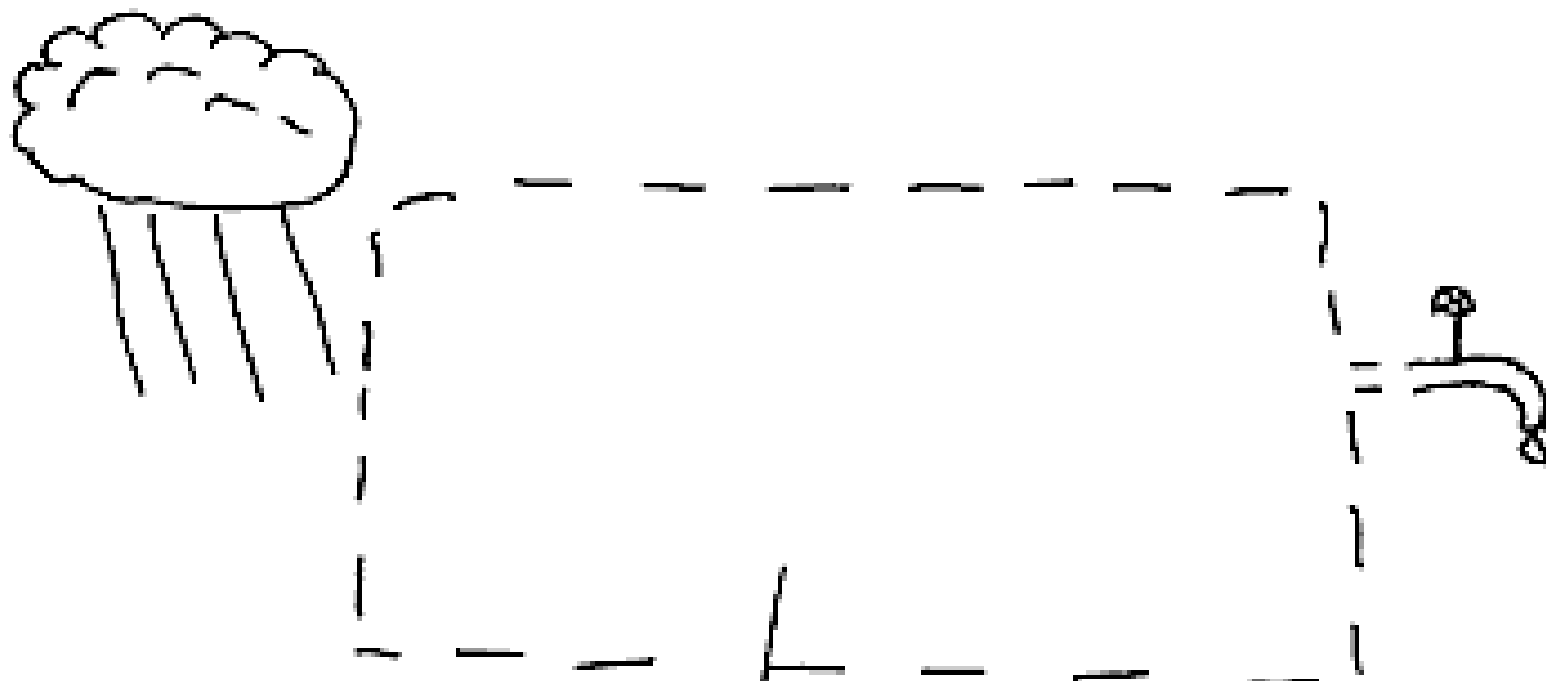
High Energy!



Low Energy



HOW WE GET WATER IN OUR HOMES



I DON'T
HAVE ANY
INFORMATION
ON THIS BIT

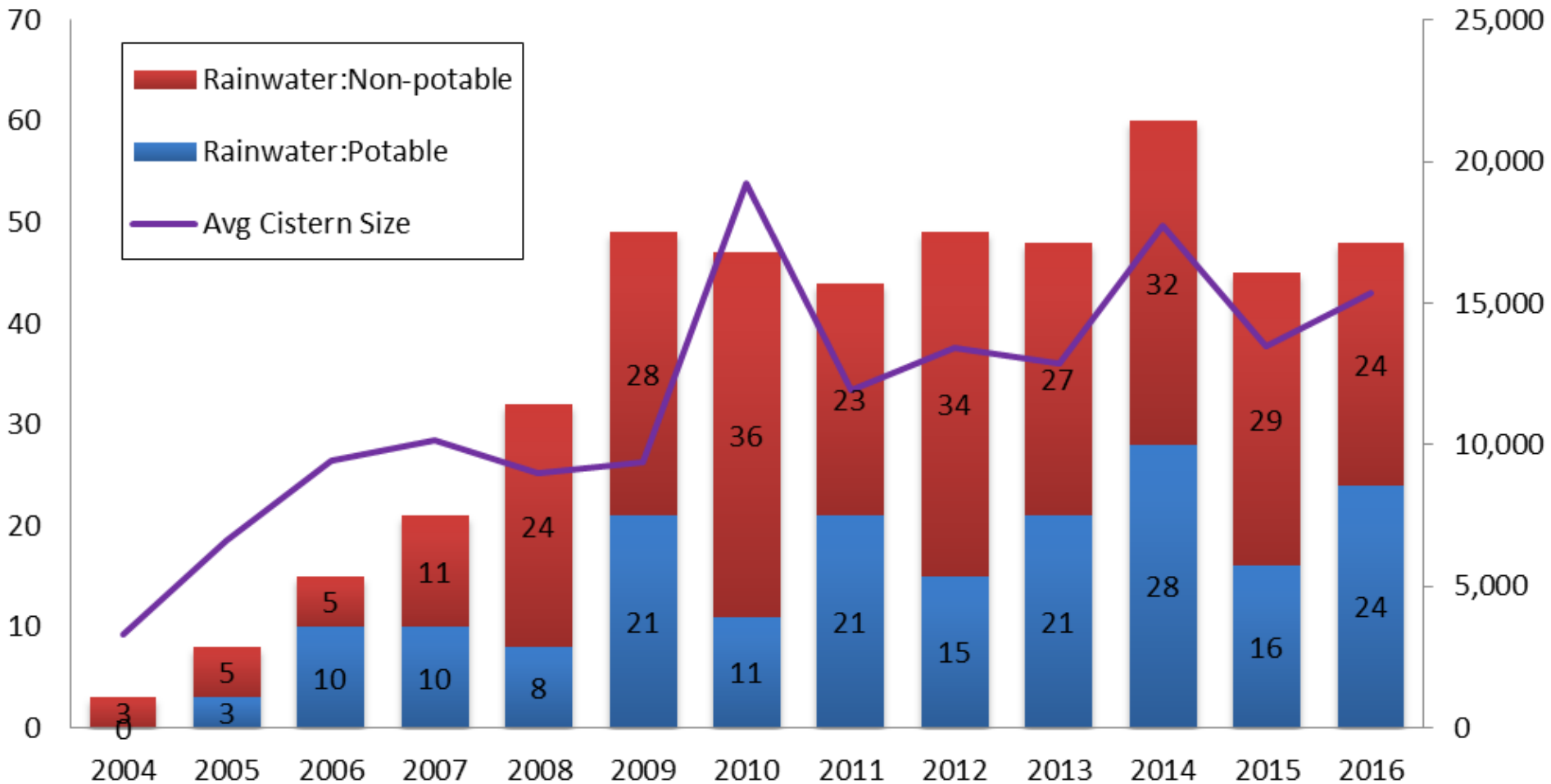




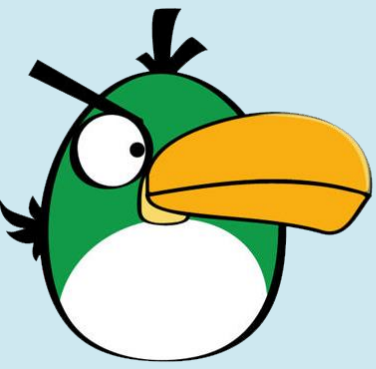




Distribution of Rainwater System Types



482 systems : 6.3M gallons : 20 employees



Water Savings



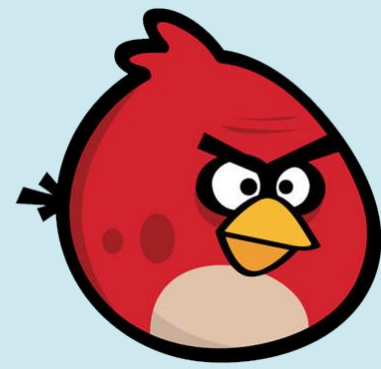
Conservation Education



Stormwater Management



Job Creation



Water-Energy Nexus

Rainwater Harvesting



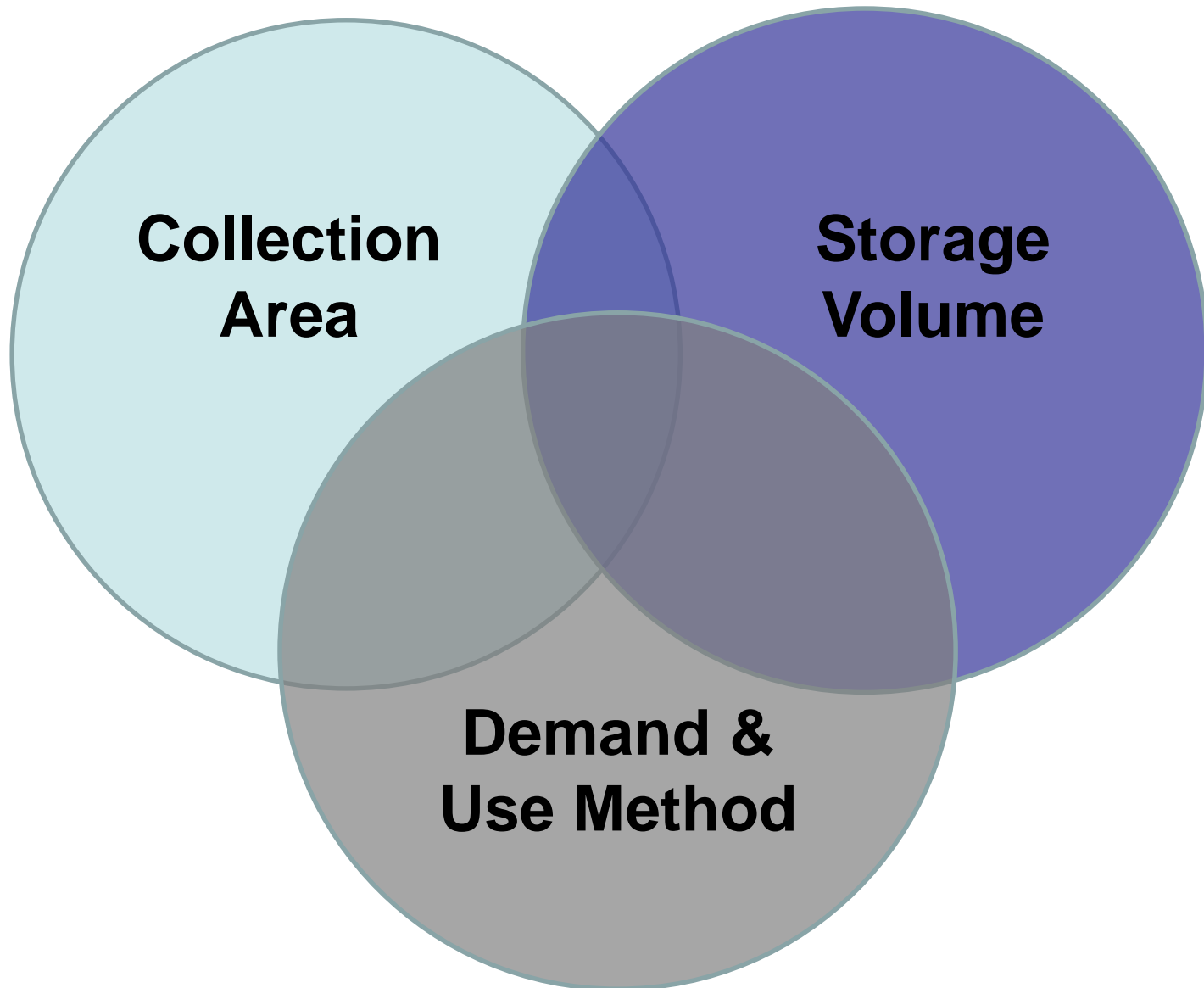


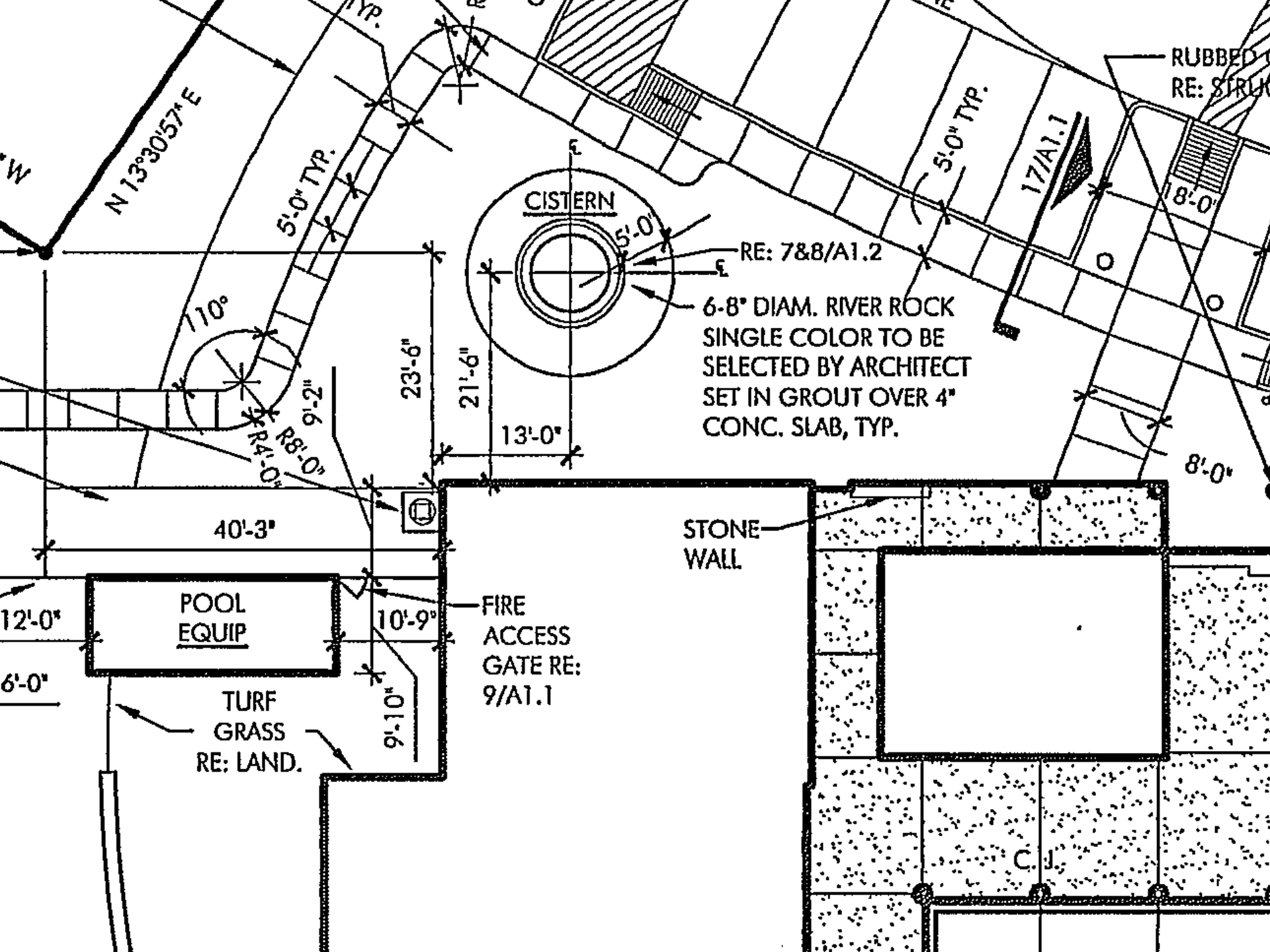






System Design Considerations





N 13°30'57" E

5'-0" TYP.

110°

R 8'-0"
R 4'-0"

23'-6"

21'-6"

13'-0"

CISTERN

RE: 7&8/A1.2

6-8" DIAM. RIVER ROCK
SINGLE COLOR TO BE
SELECTED BY ARCHITECT
SET IN GROUT OVER 4"
CONC. SLAB, TYP.

5'-0" TYP.

17/A1.1

RUBBED
RE: STRL

18'-0"

8'-0"

40'-3"

STONE
WALL

POOL
EQUIP

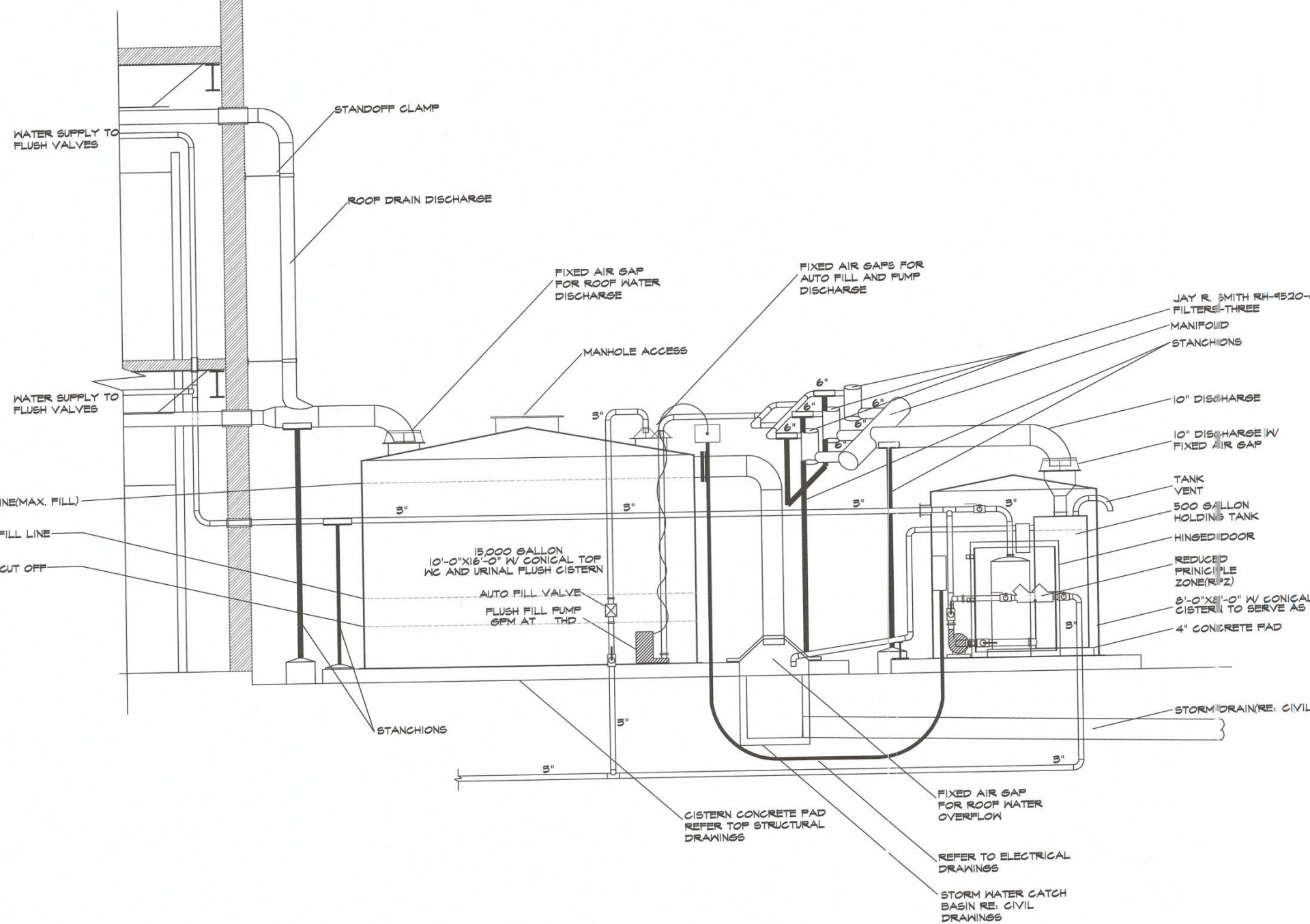
FIRE
ACCESS
GATE RE:
9/A1.1

TURF
GRASS
RE: LAND.

12'-0"

6'-0"

10'-9"
9'-10"



WATER SUPPLY TO FLUSH VALVES

STANDOFF CLAMP

ROOF DRAIN DISCHARGE

FIXED AIR GAP FOR ROOF WATER DISCHARGE

FIXED AIR GAPS FOR AUTO FILL AND PUMP DISCHARGE

JAY R. SMITH RH-4520-FILTERS-THREE
MANIFOLD
STANCHIONS

WATER SUPPLY TO FLUSH VALVES

MANHOLE ACCESS

10" DISCHARGE

10" DISCHARGE W/ FIXED AIR GAP

LINE (MAX. FILL)

FILL LINE

CUT OFF

TANK VENT

500 GALLON HOLDING TANK

HINGED DOOR

REDUCED PRINCIPLE ZONE (RPZ)

8'-0" X 8'-0" W/ CONICAL CISTERNS TO SERVE AS

4" CONCRETE PAD

15,000 GALLON
10'-0" X 16'-0" W/ CONICAL TOP
WC AND URINAL FLUSH CISTERNS

AUTO FILL VALVE
FLUSH FILL PUMP
GPM AT THD

STORM DRAIN (RE: CIVIL)

STANCHIONS

CISTERNS CONCRETE PAD
REFER TOP STRUCTURAL
DRAWINGS

FIXED AIR GAP FOR ROOF WATER
OVERFLOW

REFER TO ELECTRICAL
DRAWINGS

STORM WATER CATCH
BASIN RE: CIVIL
DRAWINGS



ARCSEA

AMERICAN RAINWATER CATCHMENT
SYSTEMS ASSOCIATION



*International Association of
Plumbing and Mechanical Officials*

ARCSEA/ASPE/ANSI 63-2013: *Rainwater Catchment Systems*

Rainwater Harvesting System Installer License Legislation

HB 173 sponsored by Rep. Eddie Lucio III

Texas Population Growth

